

# The Carpenter's Tool Box

VOLUME 10, ISSUE 3 MARCH, 2008

## “Serving Bread or Breaking Bread” by Rev. Duane L. Sich

*“Then Jesus took a piece of bread, gave thanks to God, broke it and gave it to them, saying ‘This is my body, which is given for you. Do this in remembrance of me.’”*  
Luke 22:19

In every Christian tradition, the Lord’s Supper, also called the Eucharist, Holy Communion and The Last Supper are each a gathering of God’s people for thanksgiving, healing and fellowship. When Jesus celebrated this meal with his disciples, (the very last meal he had with them) he mandated (that’s where the word Maundy Thursday comes from) that all who believe in him should come to the table together and break bread; to eat the bread and share the cup in remembrance of Him. And so believers frequently do. We gather in our churches, we join together at Christ’s Table with brothers and sisters in our families of faith and together we receive God’s grace with gratitude. We share the

broken bread.

The mission of Friends of the Carpenter is to bring more of our brothers and sisters into the fellowship of faith and to take their place at the table. However those who are homeless often feel unfit to come in and seldom feel welcome to join in. That’s where our woodwork tables begin to build a bridge – a bridge back. It’s amazing to see how the hand sanding which takes the rough edges off the wood provides a process where conversations of God’s love smoothes the rough edges of broken relationships. The Friends of the Carpenter warehouse becomes a sanctuary where welcome and working together creates a congregation of worshippers. Oh, not so much in the formal sense but in a family-sense. There is laughter and levity, there’s singing and sharing; we form circles to share our names and hold hands to connect the body

of Christ. Persons, who otherwise might feel they have little to offer, just love helping out and being welcomed in. The simple tasks take on a sacramental symbolism where people pass the woodwork elements of sandpaper, wood glue and bar clamps. Everyone participates and passes the pieces along as we share a woodwork table that points to the communion table in a church where members will welcome them in.

Frequently, our friends ask, “Where is the Friends of the Carpenter church?” They want to know where we worship on Sundays. We have a consistent answer. We say, “We are not a church, we are a ministry and we currently have over 40 churches that support our mission.” The goal is to guide them to a church; to give them and our volunteers the means and the motivation to gather together at Christ’s table in

Continued on page 2



*A Ministry Of Relationships*

The Carpenter’s Tool Box is a monthly publication of FRIENDS of the CARPENTER  
P.O. Box 65358  
Vancouver, WA 98665  
(360) 750-4752

### Board of Directors:

Jay Kitchin, Bob Ruby  
Marilyn Andrews, Wayne Pueschel  
Rev. Chris Nolte,  
Wilf Zilke, Michele Silvey  
Evan Hull, Bill Parsons  
Brent Stahl

### INSIDE THIS ISSUE:

SPECIAL THANK YOU'S	1
HOMELESS COURT	2
JESUS CHRIST SUPERSTAR MOVIE SHOWING!	2
CALENDAR OF EVENTS	3
VOLUNTEER APPRECIATION— SAVE THE DATE!	3
RUMMAGE SALE	4

## THIS MONTH’S STARS! THANK YOU’S TO...

- ★ Bill Lehmann for teaching a fascinating Bible Study on Lenten “Virtues”
- ★ Ollie Mettler for his continuing service in the Wood Shop
- ★ Gary Ervin for his wonderful demonstrations at Woodworker Show & Tells

- ★ First Presbyterian and Eastwood’s Youth for visiting the Friendship Center during their 30 Hour Famine!



- ★ Congratulations to Eric and Tina Grazen on their wedding, at Orchards United Methodist Church
- ★ The 8 SHARE House Breakfast Volunteers who cook weekday mornings at 5:30 am!
- ★ All the week day “Hospitality Hosts” !

**“SERVING BREAD OR BREAKING BREAD”**

CONTINUED FROM PAGE 1

your church. When the invitation comes from a friend who is active in their church, it just feels right and reinforces the welcome. However, in order for the invitations to really work, volunteers are needed - lots of volunteers - the more the merrier!

The Friendship Center is open weekdays, Monday through Friday. At 9:30 am, whoever is in the building gathers in the office reception area for our morning Prayer Circle. We sing a couple of praise songs, listen to the daily lectionary scripture reading, reflect upon God's Word and lift up prayers of praise and prayer concerns. From there, persons go in different directions throughout the building to be engaged and active in a variety of options. Working in the wood shop, helping out in the office, putting things together in the product room are just a few of the options. Truthfully, there are generally more participants (friends who are homeless) than volunteers, which sets up a unique situation. Because the participants are often in the Friendship Center more frequently than our volunteers, they have a more current aware-

ness of projects that are in process. More often than not, a participant will say, "Come with me; I'll show you what we're doing." That's a scenario they seldom experience elsewhere, that is - being in a leadership role and entrusted to "pass the elements" to another person.

Tuesday mornings are special as our 9:30 am gathering is lead by local pastors who take turns leading our daily devotion. It helps participants to meet a variety of pastors. Again, after the devotions are done, persons are sent off in twos or threes to the various tasks where conversations "around the table" continue.

Wednesdays, in addition to our 9:30 morning devotion, we close the Center over the lunch hour to attend the Noon Prayers at St. Paul's Lutheran Church - 13<sup>th</sup> & Franklin Street. Pastor Chris Nolte, along with his staff lead this service which has become a "main-stay" for Friends of the Carpenter. The messages are always moving, but the music is exquisite. Pastor Chris plays the piano in a way that allows one to worship without words. After worship, we return to the Friendship Center much like the "woman at the well who drank

living water." Stories and personal sharing continues the communion of saints and the gathering around tables of love.

Thursdays, something super special occurs at 9:30 Prayer Circle. In addition to all the other folks who gather, currently two gentlemen from a local Vocational Development and Community Service organization join with us with their caregivers. They both have severe disabilities, one who has cerebral palsy. Bobby arrives in a wheel chair, transported by C-Van. He is unable to speak a word, but the sounds he makes are unmistakably a joyful noise. His muscle spasms and uncontrollable arm movement does not hinder him from greeting everyone with a "High 5" or a gracious hug. He sings with utterances and outbursts, banging a tambourine to rhythm. Without uttering a word that makes sense, he contributes a contagious enthusiasm and expression of gratitude that humbles and helps everyone to praise God and pass the plate of God's love along. Activities and woodwork follow, but the best bread was already broken!

Though everyday woodwork happens in the shop, Fridays tend

to be the day that several volunteer woodworkers show up. The saws hum and sawdust flies; but all stops for the mid-morning coffee break. Much like the words in the communion liturgy, "People come from east and west and sit at table ..." and so it feels as folks from a wide diversity of situation and experience share stories and let God's love "sink in" as we sit at table and symbolically "break bread."

It's predictable: many of the FOC volunteers came to the ministry believing they would "serve bread," that is to help others; and that's fine and it does happen. However the fellowship and forming friendships quickly changes the experience to "breaking bread" and becoming the Body of Christ together. Volunteers are needed, but maybe more than serving, you will find yourself being served. More than feeding, you will also be fed. As St. Francis of Assisi said, "It is in giving that we receive." Come "Break Bread" together!



**COURT DEFENDENT ADVOCATES NEEDED**

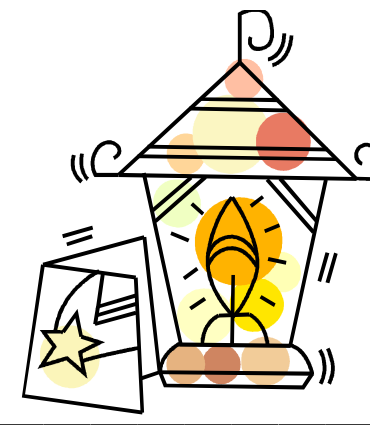
Many agencies ask for commodities ... food, clothing, toiletries, cast offs or excess, all which goes to a good cause. However, like the Uncle Sam caricature, Friends of the Carpenter NEEDS

YOU! Hopefully it's been awhile since you've had to appear in court, maybe never. But many of the Friends of the Carpenter friends have a myriad of illegal and misdemeanor matters that hale them to court. If they don't show, it'll get worse; when they do show, the least it is - is scary. The Bible says, "Love casts out all fear." In the case of appearing in court, having a friend go with you helps make the fear go away and helps the defendant find a way to figure





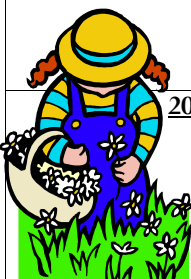

things out. Each month (2<sup>nd</sup> Wednesday afternoons) Clark County holds "Homeless Court." Friends of the Carpenter is seeking volunteers who will go with our friends as they face the court. As a volunteer, you need not be afraid but you can help make the fears of one who is, fade away. Also, it's amazing how powerful having an advocate can be to making the corrections process really work. If you're willing to consider this Call ... FOC NEEDS YOU!

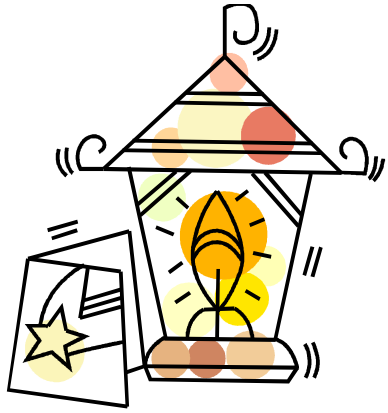
**“JESUS CHRIST SUPER STAR”**  
**Showing at the Friendship Center on the Big TV Screen!**  
**Wednesday, March 19th - Following Noon worship at St. Paul Lutheran Church**

SUNDAY	MONDAY
<p><b>March 16</b>  <b>Palm Sunday</b></p>	<p>Serve SHA                      Break                      Open SH                      1—3:30</p>
<p><b>23</b>  <b>Happy Easter!</b></p>	<p>Serve SHA                      Break                      Open SH                      1—3:30                      Cook SHARE Din</p>
<p><b>30</b>  <b>Rummage Sale Receiving Begins</b></p>	<p>Serve SHA                      Break                      Friendship Cen                      CLOSED du                      STAFF RETRE</p>
<p><b>6</b>                      Rev. Sich preaches at <b>Orchards UMC</b>                      Beautiful Savior Lutheran Mission Fair</p>	<p>Serve SHA                      Break                      Open SH                      1—3:30</p>
<p><b>13</b></p>	<p>Serve SHA                      Break                      Open SH                      1—3:30</p>
<p><b>20</b></p>	<p>Serve SHA                      Break                      Open SH                      1—3:30</p>



# MARCH & APRIL 2008

SUNDAY	MONDAY	TUESDAY	WEDNESDAY	THURSDAY	FRIDAY	SATURDAY
<b>March 16</b> <b>Palm Sunday</b> 	<b>17</b> Serve SHARE Breakfast Open Shop 1—3:30 pm	<b>18</b> Serve SHARE Breakfast Center Devotion & "Way of the Cross" 9:30—11:30 am	<b>19</b> Serve SHARE Breakfast Open Shop 9:30—11:30 am Noon Worship & Special Movie	<b>20</b> Serve SHARE Breakfast Open Shop 9:30—11:30 am	<b>21</b> Serve SHARE Breakfast Open Shop 9:30—11:30 am CENTER CLOSED AT NOON	<b>22</b> 
<b>23</b> <b>Happy Easter!</b> 	<b>24</b> Serve SHARE Breakfast Open Shop 1—3:30 pm Cook SHARE Dinner	<b>25</b> Serve SHARE Breakfast Center Devotion & Activity 9:30—11:30 am Rummage Sale Mtg.	<b>26</b> Serve SHARE Breakfast Open Shop 9:30—11:30 am Noon Worship & Wood Event	<b>27</b> Serve SHARE Breakfast Open Shop 9:30—11:30 am	<b>28</b> Serve SHARE Breakfast Share Outreach Open Shop 9:30—11:30 am	<b>29</b>
<b>30</b> Rummage Sale Receiving Begins 	<b>31</b> Serve SHARE Breakfast Friendship Center CLOSED due to STAFF RETREAT	<b>April 1</b> Serve SHARE Breakfast Center Devotion & Activity 9:30—11:30 am	<b>2</b> Serve SHARE Breakfast Open Shop 9:30—11:30 am Noon Worship & Wood Event	<b>3</b> Serve SHARE Breakfast Open Shop 9:30—11:30 am	<b>4</b> Serve SHARE Breakfast Share Outreach Open Shop 9:30—11:30 am	<b>5</b> Woodworker Show & Tell Rummage Sale Receiving 9am—noon
<b>6</b> Rev. Sich preaches at <b>Orchards UMC</b> Beautiful Savior Lutheran Mission Fair	<b>7</b> Serve SHARE Breakfast Open Shop 1—3:30 pm	<b>8</b> Serve SHARE Breakfast Center Devotion & Activity 9:30—11:30 am	<b>9</b> Serve SHARE Breakfast Open Shop 9:30—11:30 am Noon Worship & Newsletter	<b>10</b> Serve SHARE Breakfast Open Shop 9:30—11:30 am	<b>11</b> Serve SHARE Breakfast Share Outreach Open Shop 9:30—11:30 am	<b>12</b>
<b>13</b> 	<b>14</b> Serve SHARE Breakfast Open Shop 1—3:30 pm	<b>15</b> Serve SHARE Breakfast Center Devotion & Activity 9:30—11:30 am	<b>16</b> Serve SHARE Breakfast Open Shop 9:30—11:30 am Noon Worship & Special Movie	<b>17</b> Serve SHARE Breakfast Open Shop 9:30—11:30 am	<b>18</b> Serve SHARE Breakfast Share Outreach Open Shop 9:30—11:30 am	<b>19</b> Cook SHARE Brunch & Wood Event
<b>20</b> 	<b>21</b> Serve SHARE Breakfast Open Shop 1—3:30 pm	<b>22</b> Serve SHARE Breakfast Center Devotion & Activity 9:30—11:30 am	<b>23</b> Serve SHARE Breakfast Open Shop 9:30—11:30 am Noon Worship & Wood Event	<b>24</b> Serve SHARE Breakfast Open Shop 9:30—11:30 am	<b>25</b> Serve SHARE Breakfast Share Outreach Open Shop 9:30—11:30 am	<b>26</b> "Project Homeless Connect" Fair at Clark College



## ALL VOLUNTEERS ....

Please come for an evening of appreciation! We are so thankful for the many ways you share your time and gifts!

WHEN: Thursday., May 15, 2008 - 7:00 pm

PLACE: The Friendship Center 1600 W. 20th St.

"We thank our God every time we remember you.

In all our prayers for all of you, we always pray with joy..."



March,  
2008

**Friends of the Carpenter**  
P.O. Box 65358  
Vancouver, WA 98665

1600 W. 20th St.  
Vancouver, WA 98660

Phone: 360-750-4752  
Fax: 360-694-5800  
www.friendsofthecarpenter.org

**Contact Us!**

Rev. Duane Sich, Exec. Director  
Cell Phone: 360-936-3461  
Jan Cox, Program Manager  
Cell Phone: 360-936-3421  
Tom Iberle, Volunteer Coordinator  
Cell Phone: 360-903-3626  
Dan Nicholas, Shop Foreman  
Cell Phone: 360-771-0761  
Julie Sich, Product & Center Activities  
Cell Phone: 360-936-3463  
Bill Jennings, Yard Coordinator  
Cell Phone: 360-771-0172  
Judy Enders, Financial Secretary

*Dear Friends, Let us love one another because love comes from God. Whoever loves is a child of God and knows God  
1 John 4:7*

**Return Service Requested**

Refused

If you no longer wish to receive this newsletter, please check the box and return it to your mail carrier. We pay the postage.

NONPROFIT  
US POSTAGE  
PAID  
PERMIT 702  
VANCOUVER,  
WA



**9<sup>th</sup> Annual Rummage Sale — June 26, 27, 28**

**At The Friendship Center 1600 W. 20<sup>th</sup> St.**

**Thursday & Friday 9 am - 6 pm**

**Saturday 9 am - 12 noon**



It's not too early to start saving your **Gently Used Treasures**;

Collectibles, Electronics, Appliances, Tools, Furniture, Seasonal items, Household goods,  
Books, Clothing, Sporting goods, Artwork and Music.



**We will begin to receive your donations - in useable condition  
Beginning Monday, March 31 at the Friendship Center**

**During regular business hours: Monday - Friday, 10 am to 3 pm**

**Selected Saturdays: April 5, May 3, June 7, 9 am to 12 noon**

**Please Give Us a Call! (360) 750-4752 Donations of items are tax-deductible!**

**A Benefit for Friends of the Carpenter**

**WE NEED VOLUNTEER DRIVERS! Days Flexible!**

**A Planning and All-Volunteer Orientation Meeting is scheduled for Tuesday, March 25, 10:00 am**